

pg 319  
#3a)  $2x - 5y = 10$

$$2x - 5y - 10 = 0$$

Standard  
form

$$\frac{-5y}{-5} = \frac{-2x + 10}{-5}$$

$$y = \frac{2x}{5} - 2$$

Slope y-intercept  
form

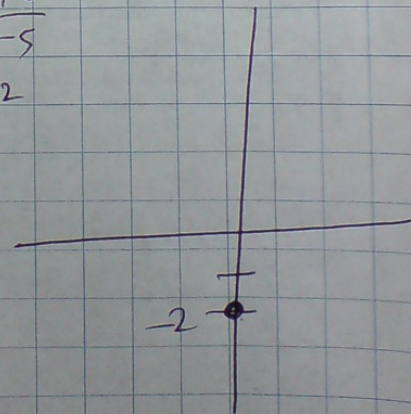
if  $x=0$  then calculate y intercept.

$$2(0) - 5y = 10$$

$$\frac{-5y}{-5} = \frac{10}{-5}$$

$$y = -2$$

$$(0, -2)$$



pg 319 #6.

Rearrange into:

$$a) 4x + 6y = -8y - 7$$

$$4x + 6y + 8y + 7 = 0$$

$$\boxed{4x + 14y + 7 = 0} \quad a) \text{ Standard Form}$$

$$14y = -4x - 7$$

$$\frac{\cancel{14}y}{\cancel{14}} = \frac{-4x}{14} - \frac{7}{14}$$

$$\boxed{y = -\frac{2x}{7} - \frac{1}{2}} \quad b) \text{ Slope y-intercept form}$$